

A cluster of clear, blue-tinted water bubbles of various sizes, some overlapping, floating against a white background.

The Right Fit

CSM[®]

Product Catalog for Hollow Fiber UF Element



CSM[®] -RO/NF/UF/MF MEMBRANES AND ELEMENTS

www.csmfilter.com



CSM Hollow Fiber UF Membrane

CSM Hollow Fiber is a PVDF based membrane, which has high fouling & high chemical resistant characteristics. CSM has implied a sponge-like structure rather than a finger-like structure so that the hollow fiber membrane shows a high tensile strength and longer durability.

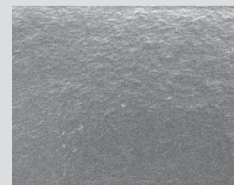
The pore size gets bigger from the feed side to the permeate, making the membrane resistance at minimum levels while causing the membrane to have a high velocity of filtering.

Membrane thickness, which remains constant in all direction, has a high pressure resistance.

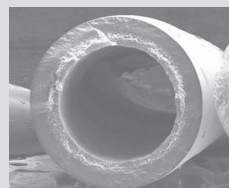
The slick membrane surface not only has a high fouling resistance, but also effectively removes microorganisms & suspended solids.



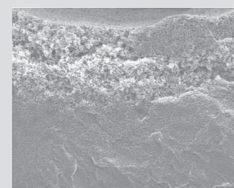
Hollow Fiber



Hollow Fiber Surface



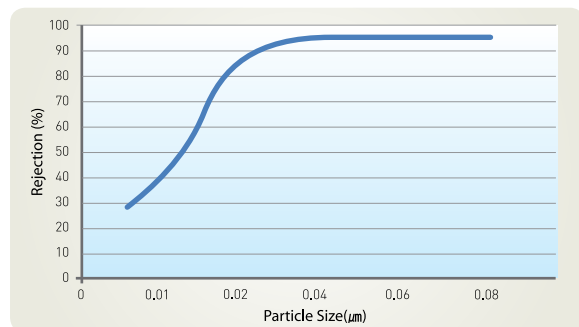
Hollow Fiber Cross Section



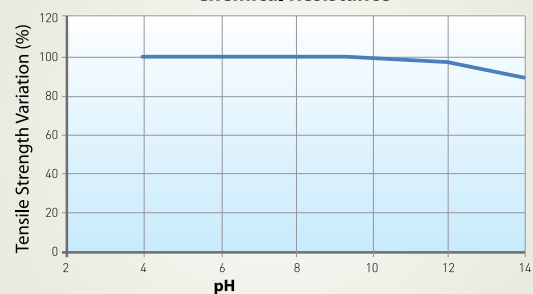
Advantages of CSM Hollow Fiber UF Elements

- Good pore distribution - pore size $0.03\mu\text{m}$
- High tensile strength of the membrane
- High chemical resistance
- Out-In flow type : low energy consumption

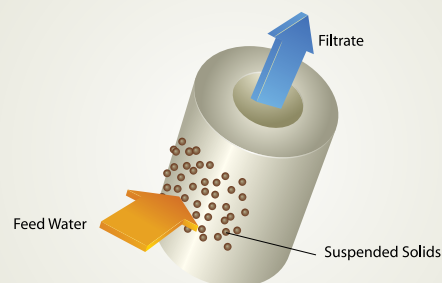
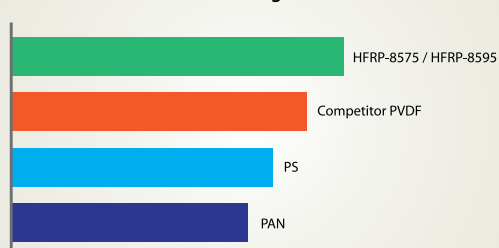
Pore Size Distribution



Chemical Resistance



Tensile Strength



Application



Drinking Water Production



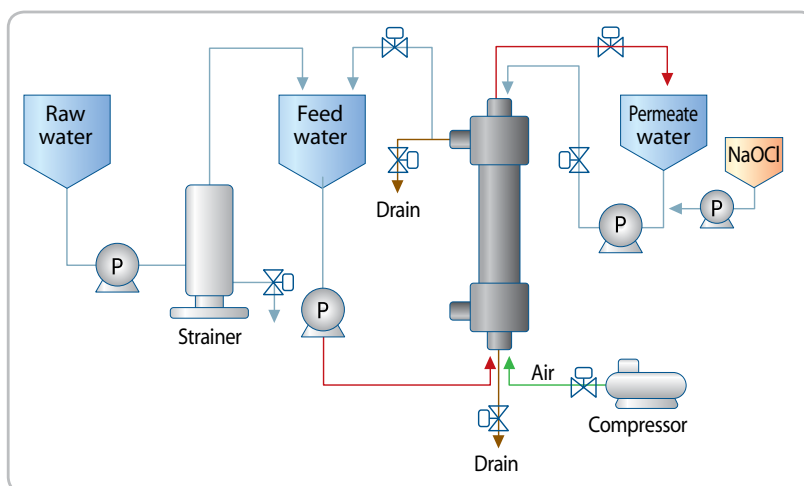
RO/NF Pretreatment



Waste Water Treatment

Specifications

Model		HFRP-8575	HFRP-8595
Dimension	Diameter	216 mm	216 mm
	Length	1,950 mm	2,300 mm
Pore Size		0.03 μ m	0.03 μ m
Hollow fiber ID / OD		0.7 mm / 1.3 mm	0.7 mm / 1.3 mm
Effective Area		60 m ²	80 m ²
Material	Membrane	PVDF	PVDF
	Potting	Polyurethane	Polyurethane
	Housing	U-PVC	U-PVC
Filtration Type		Out-In	Out-In
Permeate Flow Rate		2.0 ~ 7.2 m ³ /hr	2.8 ~ 9.6 m ³ /hr
Max. Inlet Pressure		3 kgf/cm ²	3 kgf/cm ²
Max. Operating TMP		2 kgf/cm ²	2 kgf/cm ²
Operating Temperature		1 ~ 40 °C	1 ~ 40 °C
pH Range		1 ~ 12	1 ~ 12



(CSM UF Process Flow)



Product is Certified
to NSF/ANSI 61



Product is approved by KWWA
to following KWWA Standard



CSM® GLOBAL COVERAGE



Version 2015.01

Corporate Headquarters

34F, FKI Building, 24, Yeoui-daero, Yeongdeungpo-gu,
150-881, Seoul, South Korea
Tel. +82-2-3279-7000 / Fax. + 82-2-3279-7088
E-Mail : csm@toray-tck.com

The Americas

3390 E Miraloma Ave
Anaheim, CA 92806 U.S.A.
Tel: +1-714-678-8832
E-Mail : info@csmwater.com

Europe

Calle Pilea 2 Planta 2 Oficina 8 Edificio Siter 1
28522 Rivas-Vaciamadrid, Madrid, Spain
Tel: +34-914-854-040
E-Mail : james.lee@toray-tck.com

Southeast Asia & Oceania

152 Beach Road, #18-02 Gateway East Bldg.,
Singapore 189721
Tel: +65-6592-1935
E-Mail : edward.lee@toray-tck.com

Middle East & North Africa

Bldg. 4E, A-330, PO BOX 54489, Dubai Airport
Free Zone, Dubai, UAE
Tel: +971-4-609-1963
E-Mail : jerry.oh@toray-tck.com

China

NO.2 Keyuan 4st TEDA(Jinnan) Micro-electronics
Industrial Area Balitai-Zhen Jinnan-District,
Tianjin, China 300350
Tel: +86-22-2612-2264/9472/3039/4000
E-Mail : steve.lee@toray-tck.com

India

No.203, Mohta Building, Bhikaji Cama Place,
New Delhi-110066, India
Tel: +91-11-4607-5120
E-Mail : danny.jeong@toray-tck.com

The Right Fit

CSM®

Contact your nearest CSM offices for inquiries of CSM water filtration membranes
CSM welcomes inquiries regarding diverse sizes & models not listed in this catalog
For more info. regarding our residential, commercial & industrial applications

Visit our website. www.csmfilter.com